

What's New in Forecast Pro TRAC V8

Enhanced Collaboration

Forecast Pro TRAC Version 8 now offers both Excel-based and Project-based collaboration. Both approaches make it simple to divvy up a large forecasting project to multiple “child” spreadsheets or projects that can be worked on independently and then consolidated for a holistic view of your business.

Excel Collaboration is ideal for S&OP, making it quick and easy to get input from sales and other key stakeholders throughout your forecasting process without them having to learn Forecast Pro. They can seamlessly view forecasts and make adjustments in Excel and easily load their changes back into Forecast Pro.

Unlike Forecast Pro’s Excel-based collaboration, which is limited to viewing forecasts and making overrides, project-based collaboration affords you complete access to all Forecast Pro functionality—including forecasting, reporting, graphing, and much more.

Click [here](#) for the **Project Collaboration** video

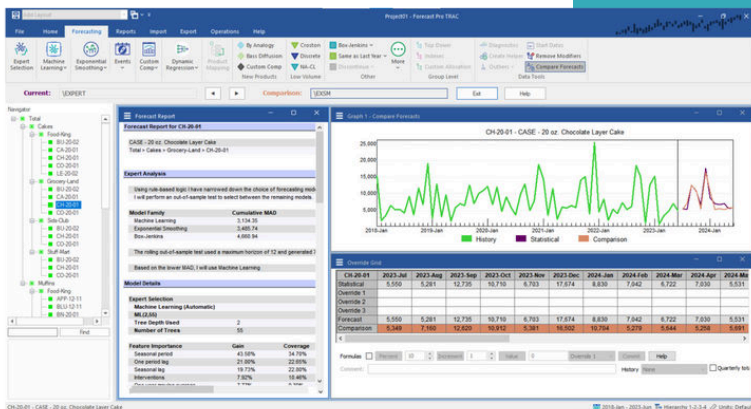


Compare Forecasts Utility

Forecast Pro now includes a Compare Forecasts Utility (CFU), making it easy for you to determine the best forecasting method to use.

CFU allows you to view the compared forecasting models graphically, in the override grid, and forecast report. If you want to use the comparison forecast, you can easily implement it with one click.

Click [here](#) for the **Compare Forecasts Utility** video



Automatic Updates & Improved Performance

Forecast Pro V8 includes convenient update notifications with easy one-click downloads and installations, along with a new license manager that enables you to seamlessly manage and transfer licenses.

Version 8 leverages multi-core processing for faster task completion, and offers improved performance logic with more user-controlled performance settings.

